

A Review Paper on Image Fusion Using Wavelet Transform

Shailesh Chavan

TIT Bhopal
amolpatil1211@rediff.com

Girraj Prasad Rathode

Asst. Prof. TIT Bhopal
girrajmits@gmail.com

Abstract – The abstract the fusion of images is the process of combining two or more images into a single image retaining important features from each. Fusion is an important technique within many disparate fields such as remote sensing, robotics and medical applications. Wavelet based fusion techniques have been reasonably effective in combining perceptually important image features. Shift invariance of the wavelet transform is important in ensuring robust sub-band fusion. Therefore, the novel application of the shift invariant and directionally selective Dual Tree Complex Wavelet Transform (DT-CWT) to image fusion is now introduced. The successful fusion of images acquired from different modalities or instruments is of great importance in many applications, such as medical imaging, microscopic imaging, remote sensing, computer vision, and robotics. With 2D and 3-D imaging and image processing becoming widely used, there is a growing need for new 3-D image fusion algorithms capable of combining 2D & 3-D multimodality or multisource images. Such algorithms can be used in areas such as 2D & 3-D e.g. fusion of images in Target tracking system, Synthetic Aperture Radar (SAR) etc. In case of target tracking system the time is the very important factor. So we take time as a comparison factor to compare different methods which we implement. In order to improve the efficiency of the project, Elapsed time for the fusion to run is being formulated.

Keywords – Image Fusion, Dual Tree Complex Wavelet Transform (DT-CWT), Synthetic Aperture Radar, Wavelet Transform.

I. INTRODUCTION

With the rapid advancements in technology, it is now possible to obtain information from multisource images. However, all the physical and geometrical information required for detailed assessment might not be available by analyzing the images separately. In multisensory images, there is often a trade-off between spatial and spectral resolutions resulting in information loss. Image fusion combines perfectly registered images from multiple sources to produce a high quality fused image with spatial and spectral information. It integrates complementary information from various modalities based on specific rules to give a better visual picture of a scenario, suitable for processing. An image can be represented either by its original spatial representation or in frequency domain. By Heisenberg's uncertainty, information cannot be compact in both spatial and frequency domains simultaneously. It motivates the use of wavelet transform which provides a multi-resolution solution based on time-scale analysis. Each subband is processed at a different resolution, capturing localized time-frequency data of image to provide unique directional information useful for image

representation and feature extraction across different scales.

With the recent rapid developments in the field of sensing technologies multisensor systems have become a reality in a growing number of fields such as remote sensing, medical imaging, machine vision and the military applications for which they were first developed. The result of the use of these techniques is a great increase of the amount of data available. Image fusion provides an effective way of reducing this increasing volume of information while at the same time extracting all the useful information from the source images. Multi-sensor data often presents complementary information about the region surveyed, so image fusion provides an effective method to enable comparison and analysis of such data. The aim of image fusion, apart from reducing the amount of data, is to create new images that are more suitable for the purposes of human/machine perception, and for further image-processing tasks such as segmentation, object detection or target recognition in applications such as remote sensing and medical imaging. For example, visible-band and infrared images may be fused to aid pilots landing aircraft in poor visibility. Multi-sensor images often have different geometric representations, which have to be transformed to a common representation for fusion. This representation should retain the best resolution of either sensor. A prerequisite for successful in image fusion is the alignment of multi-sensor images. Multi-sensor registration is also affected by the differences in the sensor images.

II. MULTI-SENSOR IMAGE FUSION SYSTEM

Multi-sensor image fusion systems overcomes the limitations of a single sensor vision system by combining the images from these sensors to form a composite image. Figure 1-1 shows an illustration of a multi-sensor image fusion system. In this case, an infrared camera is supplementing the digital camera and their individual images are fused to obtain a fused image. This approach overcomes the problems referred to before, while the digital camera is appropriate for daylight scenes, the infrared camera is suitable in poorly illuminated ones.

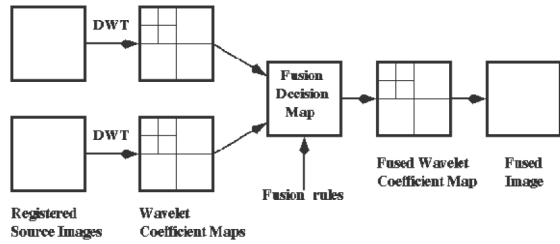
Figure

Methodology:

For that research we choose a technique as a Wavelet Transformation.

Image fusion using wavelet transform:

The block diagram of a generic wavelet-based image fusion scheme is shown in the following figure.



Wavelet transform is first performed on each source images, and then a fusion decision map is generated based on a set of fusion rules. The fused wavelet coefficient map can be constructed from the wavelet coefficients of the source images according to the fusion decision map. Finally the fused image is obtained by performing the inverse wavelet transform.

From the above diagram, we can see that the fusion rules are playing a very important role during the fusion process. Here are some frequently used fusion rules shown in below figure.

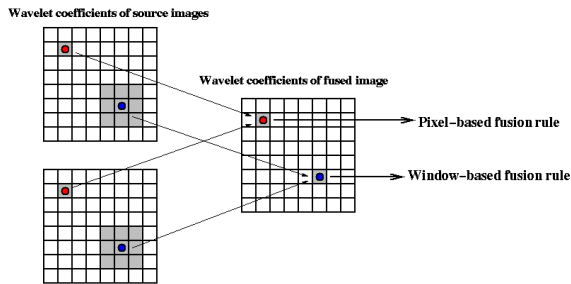


Fig. Pixel and window based image fusion

Wavelet Transformation

The wavelet transform is a powerful tool for multi-resolution analysis. The multiresolution analysis requires a set of nested multiresolution sub-spaces as illustrated in the following figure.

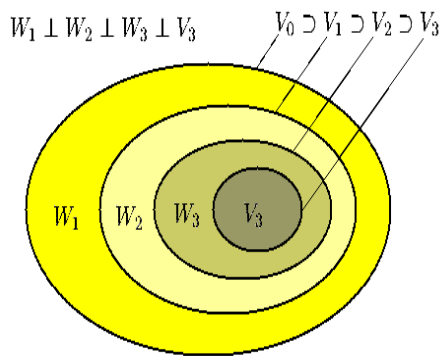


Fig. Wavelet Transformation

The original space V_0 can be decomposed into a lower resolution sub-space V_1 , the difference between V_0 and V_1 can be represented by the complementary sub-space W_1 . Similarly, we can continue to decompose V_1 into V_2 and W_2 . The above graph shows 3-level decomposition. For N -level decomposition, we will obtain $N+1$ sub-space with one coarsest resolution sub-space V_N and N difference sub-space W_i , i is from 1 to N . Each digital signal in the space V_0 can be decomposed into some components in each sub-space

2 D Discrete wavelet transform (DWT)

Since image is 2-D signal, we will mainly focus on the 2-D wavelet transforms. The following figures show the structures of 2-D DWT with 3

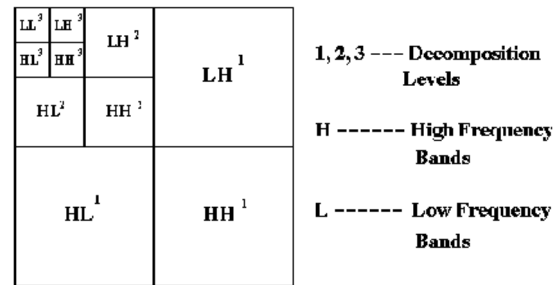


Fig. 2 D Discrete wavelet transforms

Wavelet Families/types

- Haar
- Daubechies
- Biorthogonal
- Coiflets
- Symlets

Haar wavelet:

The Haar wavelet is the simplest wavelet. It uses averaging and differencing terms, storing detail coefficients, eliminating data, and reconstructing the matrix such that the resulting matrix is similar to the initial matrix.

$$W_2(x) = \begin{cases} 1 & \text{for } 0 \leq x < 0.5 \\ -1 & \text{for } 0.5 \leq x < 1 \end{cases}$$

$$W_4(x) = \begin{cases} 1 & \text{for } 0 \leq x < 0.25 \\ -1 & \text{for } 0.25 \leq x < 0.5 \end{cases}$$

Daubechies Wavelets:

The names of the Daubechies family wavelets are written dbN , where N is the order, and db the "surname" of the wavelet. These wavelets have no

$$h(x) = \sum_{k=0}^{N-1} c_k x^k (1-x)^{2N-k}$$

$$|h_0(\omega)|^2 = (\cos^2(\frac{\omega}{2}))^{2N} (\cos^2(\frac{\omega}{2}))$$

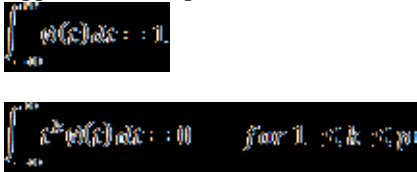
$$h_0(\omega) = \frac{1}{\sqrt{2}} \sum_{k=0}^{N-1} h_k e^{-j\omega k}$$

Take a look at the discrete filters and the scaling/wavelet functions of Daubeches wavelets. These functions are far from symmetry. That's because Daubechies wavelets select the minimum phase square root such that the energy concentrates near the starting point of their support. Symmlets select other set of roots to have closer symmetry but with linear complex phase.

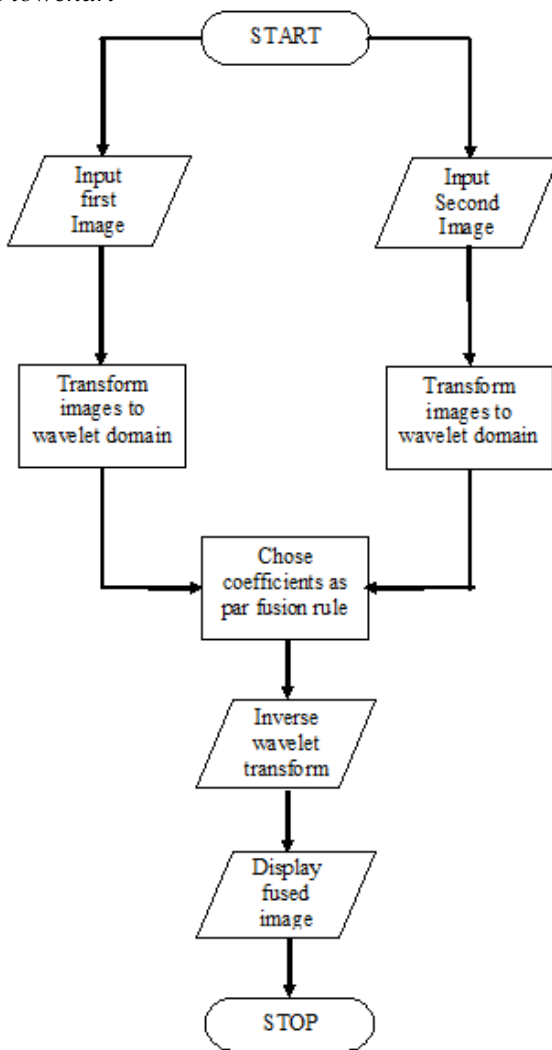
$$W(x) = \sqrt{2} g(x) \phi(x)$$

Coiflets wavelet

For an application in numerical analysis, Coifman construct a family of wavelets that have p vanishing moments, minimum size support and the equation below can be taken as some requirement about vanishing moments of the scaling function. The resulting coiflets has a support of size $(3p - 1)$.



Flowchart



Experimental results and discussion

Several image databases are built in order to test the system. A number of experiments are performed on different images as described below. We fuse the two images using different wavelet transform. The aim of the project is to test each technique by the calculation of execution time for 2D images and for some combinations for 3D images

Results for 2-D:-

Following table shows the comparison between all the wavelets on the basis of time. So here we are taking time as parameter to find out best wavelet transform for RADAR or remote sensing images. Hence from observations haar is best suited for 2-D and Coiflets required highest time for fused 2-D image.

Table 1: Results for 2-D

Wavelet	HAAR	HAAR	Db2
MSE	MAX-MIN	233.5823	331.5726
MSE	MEAN-MEAN	118.6851	118.6851
MSE	MAX-MAX	78.4259	8.8229
PSNR	MAX-MIN	24.4464	22.9250
PSNR	MEAN-MEAN	27.3868	27.3868
PSNR	MAX-MAX	29.1862	38.6453

III. CONCLUSION

In this work a new approach to 3-D image fusion using wavelet transform. Several known 2-D WT fusion schemes have been extended to handle 3-D images have been proposed. The goal of this project is to present the new framework for 3-D image fusion using the wavelet transform, rather than to compare the results of the various fusion rules. Wavelet transform fusion diagrams have been introduced as a convenient tool to visually describe different image fusion schemes. A very important advantage of using 3-D WT image fusion over alternative image fusion algorithms is that it may be combined with other 3-D image processing algorithms working in the wavelet domain. So finally I conclude that Db2 wavelet is the best for image fusion

REFERENCES

- [1] A.Umaamaheshvari, K.Thanushkodi, "Image fusion techniques", IJRRAS 4 (1), pp 69-74, July 2010.
- [2] Ligia Chiorean, Mircea-Florin Vaida "Medical Image Fusion Based on Discrete Wavelet Transform Using Java Technology", Proceedings of the ITI 2009 31st Int. Conf. on Information Technology Interfaces Cavtat, Croatia , pp 55-60 June 22-25, 2009
- [3] Gonzalo Pajares*, Jes*us Manuel de la Cruz, "A wavelet-based image fusion tutorial", pp 1855 - 1872 IEEE 2004
- [4] Mohd. Shahid, Sumana Gupta, "Novel Masks for Multimodality Image Fusion using DTCWT" IEEE-2007
- [5] Hong Zhang, Lei Liu, Nan Lin "A Novel Wavelet Medical Image Fusion Method", International Conference on Multimedia and Ubiquitous Engineering, 2007
- [6] X.X. Yin, B.W. H. Ng, B. Ferguson, S.P. Mickan, B.M. Fischer, T.J. Rainsford and D. Abbott "Information Fusion and Wavelet Based Segment Detection witZ Applications to the Identification of 3D Target T-ray CT Imaging", pp 187, IEEE-2006.
- [7] Debasish Patnaik, "Biomedical Image Fusion Using Wavelet Transform and SOFM Neural Network", pp 1189-1194, IEEE-2006.
- [8] X.X. Yin, B.W.-H. Ng, B. Ferguson, S.P. Mickan, D. Abbott "Terahertz Computed Tomographic Reconstruction and its Wavelet-based Segmentation by Fusion", pp 3409-3414 , IEEE 2007
- [9] Fang Liu, Senior Member, IEEE, Junying Liu and Yi Gao "Image Fusion Based On Wedgelet And Wavelet" Proceedings of 2007 International Symposium on Intelligent Signal Processing and Communication Systems, pp- 682-685, Nov.28-Dec.1, 2007



- [10] Y Licai, LIU Xin Yao Yucui "Medical Image Fusion Based on Wavelet Packet transform and Self-adaptive Operator", pp 2647-2650, 2008 IEEE
- [11] Zhiming Cui, Guangming Zhang, Jian Wu "Medical Image Fusion Based on Wavelet Transform and Independent Component Analysis" International Joint Conference on Artificial Intelligence, pp 480-483, IEEE 2009
- [12] Yong Yang, Dong Sun Park, Shuying Huang, Zhijun Fang, Zhengyou Wang "Wavelet based Approach for Fusing Computed Tomography and Magnetic Resonance Images", pp 5770-5774, IEEE 2009
- [13] Yuhui Liu, Jinzhu Yang PET/CT Medical Image Fusion Algorithm Based on Multiwavelet Transform
- [14] Paul Hill, Nishan Canagarajah and Dave Bull Image Fusion using ComplexWavelets
- [15] Bo Yang, Erkui Chen Fusion Using an Improved Max-lifting Scheme 978-1-4244-4131-0/09/\$25.00 ©2009 IEEE
- [16] S. G. Nikolov, D. R. Bull, C. N. Canagarajah, M. Halliwell, P. N. T. Wells Image Fusion Using A 3-D Wavelet Transform Image Processing and its Applications, Conference Publication No. 465 0 IEE 1999
- [17] P.R. Hill, D.R. Bull and C.N. Canagarajah Image Fusion Using A New Framework For Complex Wavelet Transforms,IEEE 2005